

Intricate Cross Stitch

<http://www.intricatecrossstitch.com>

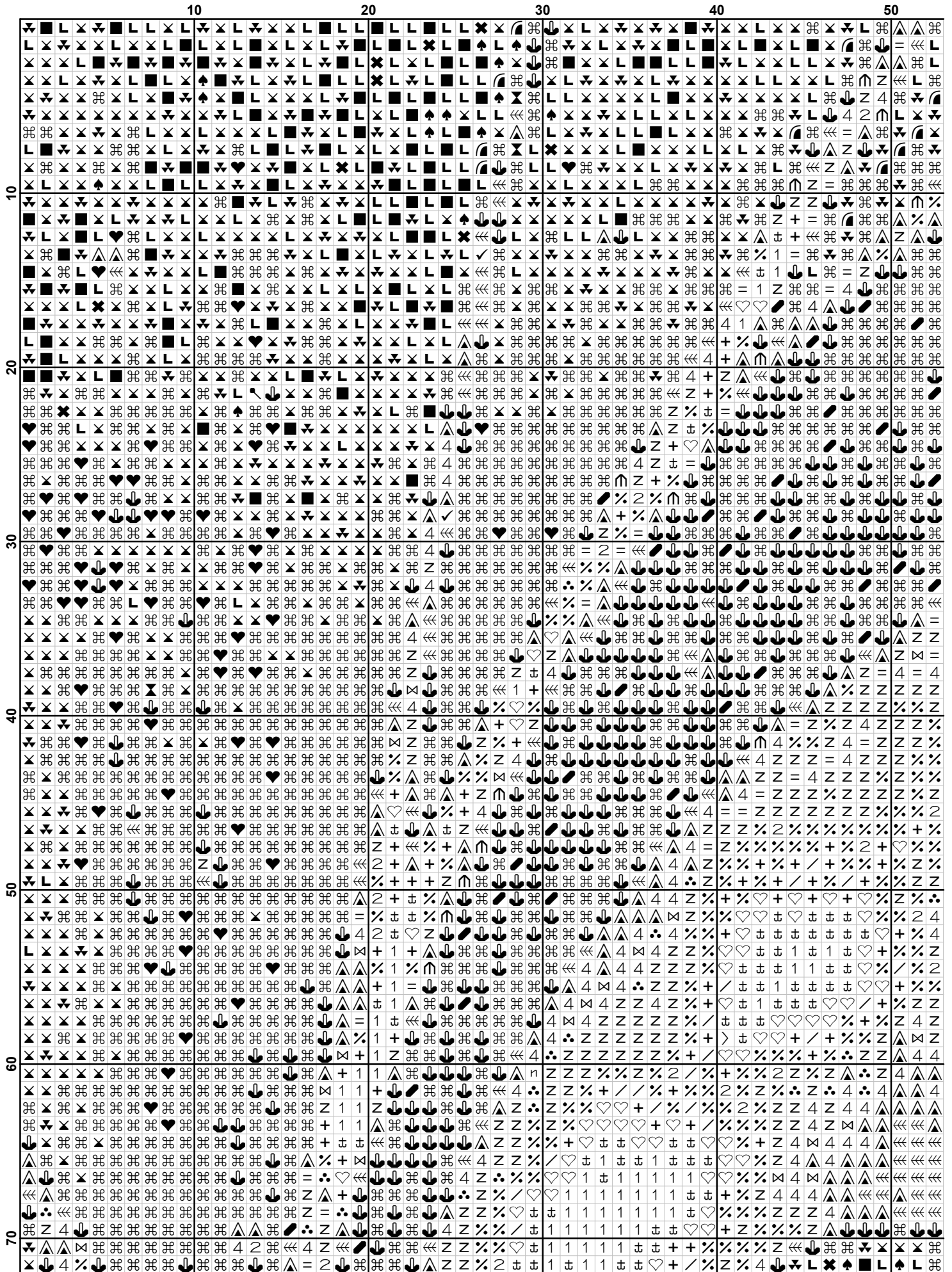
Moon Worshiper

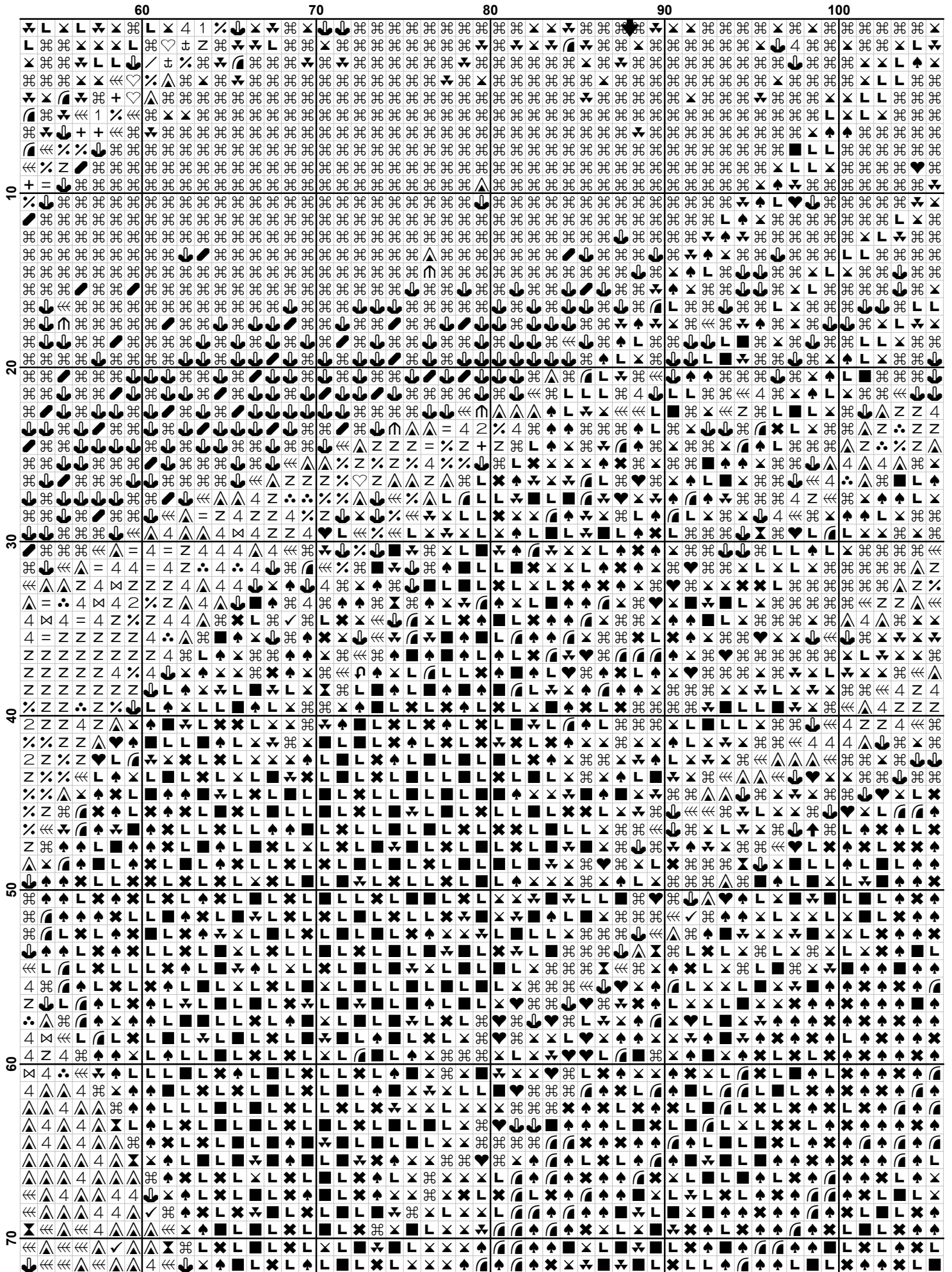


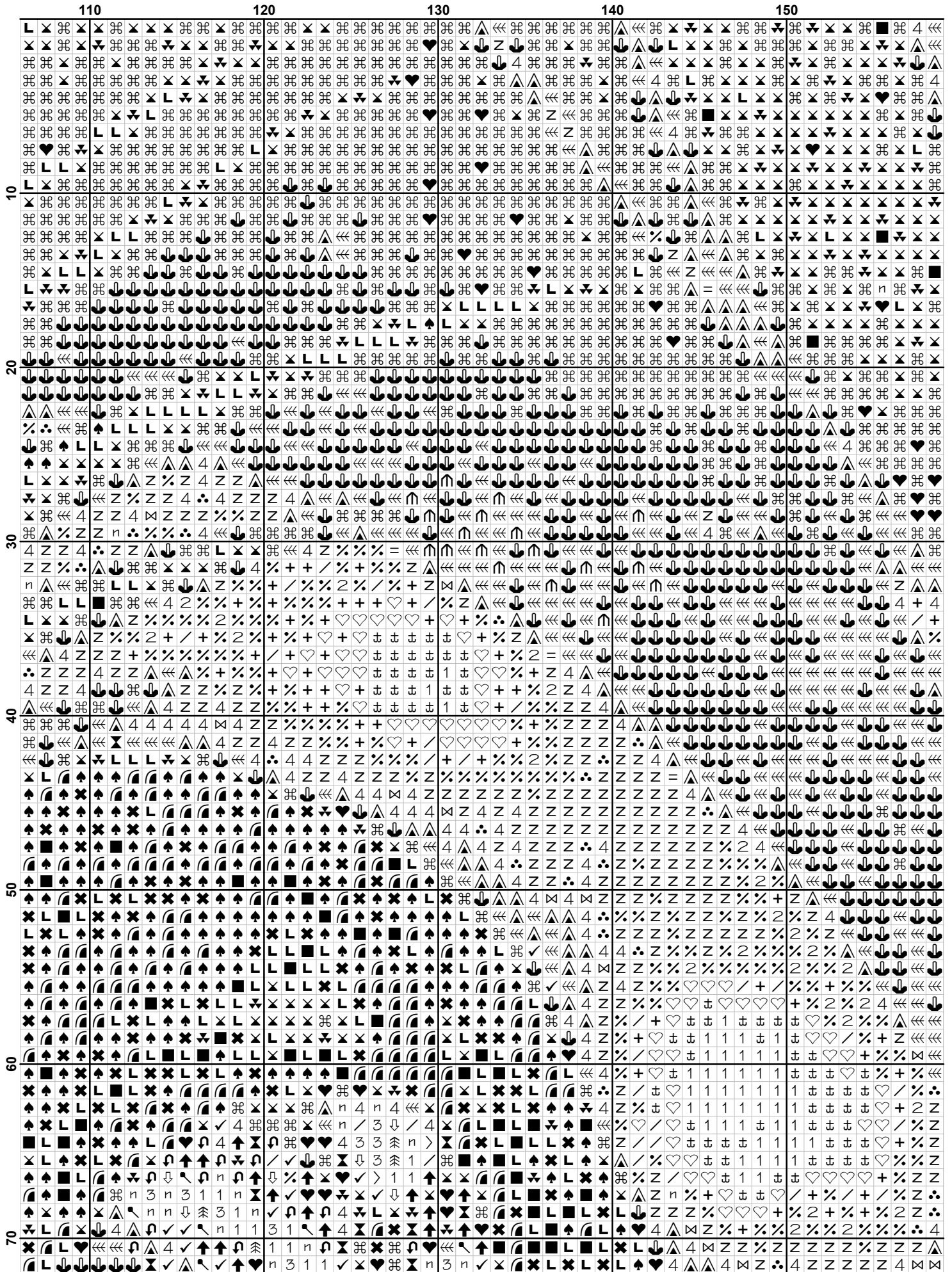
Intricate Cross Stitch ©

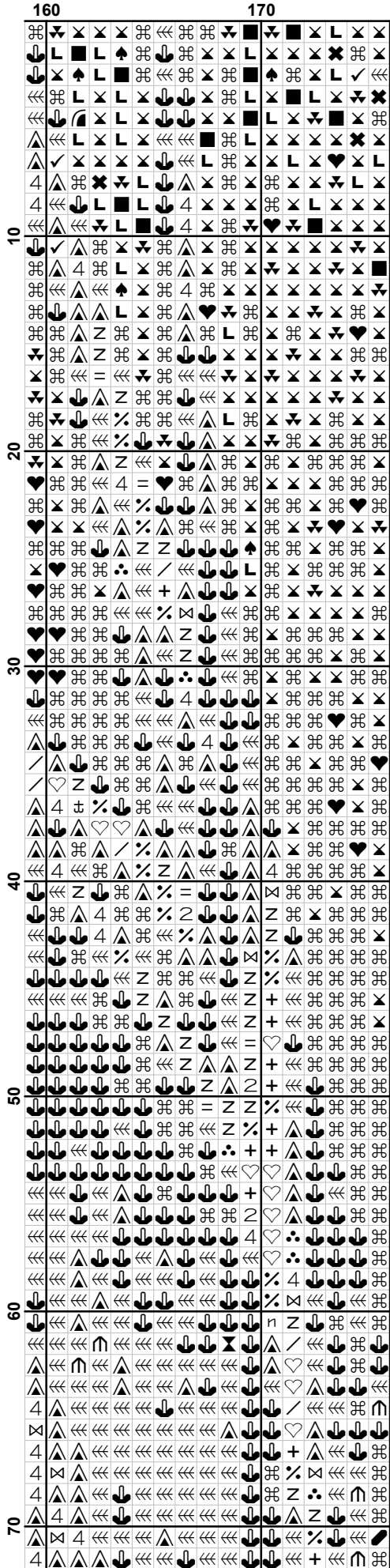
This cross stitch pattern is for personal use only.

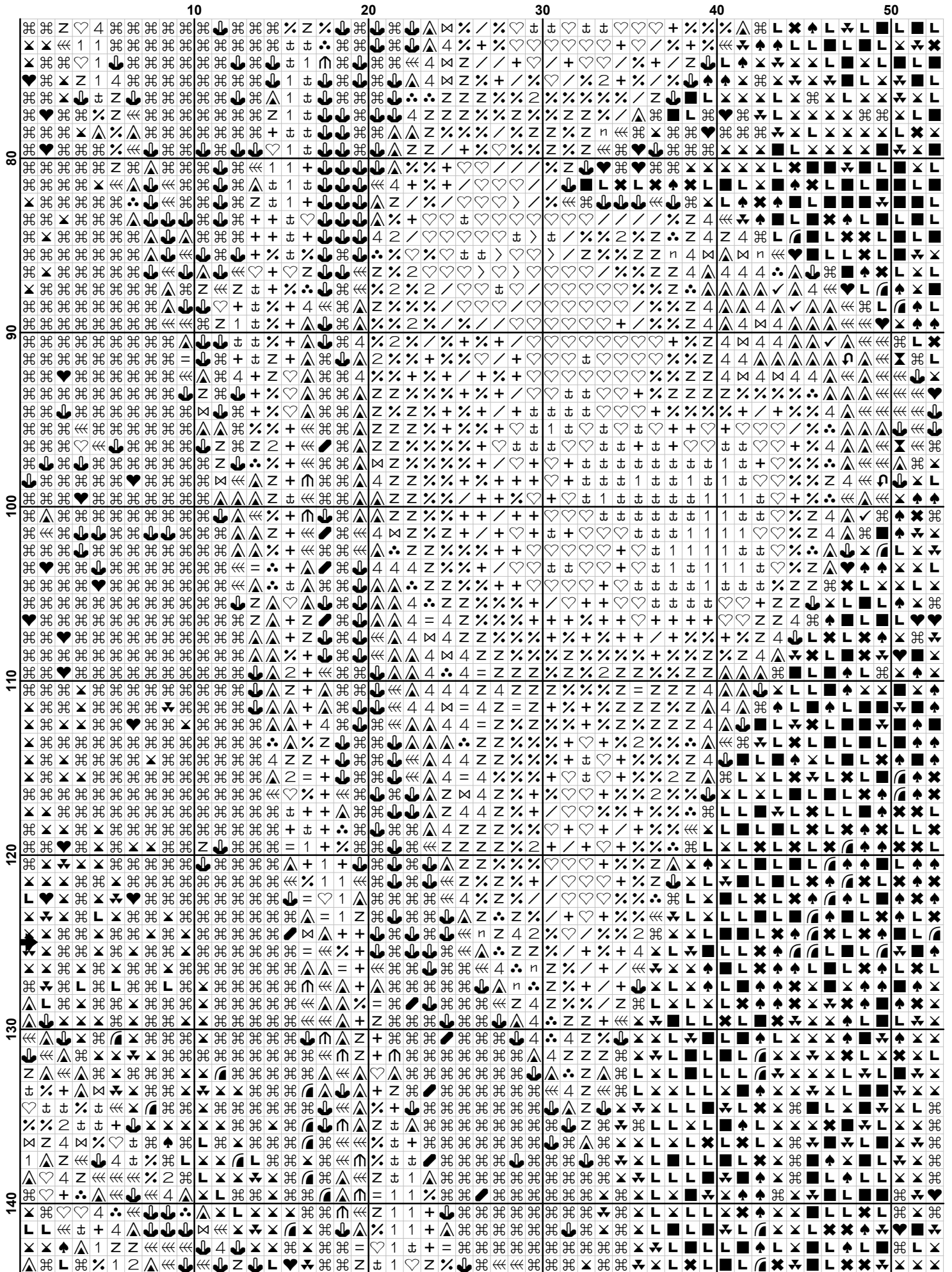
<http://www.intricatecrossstitch.com>

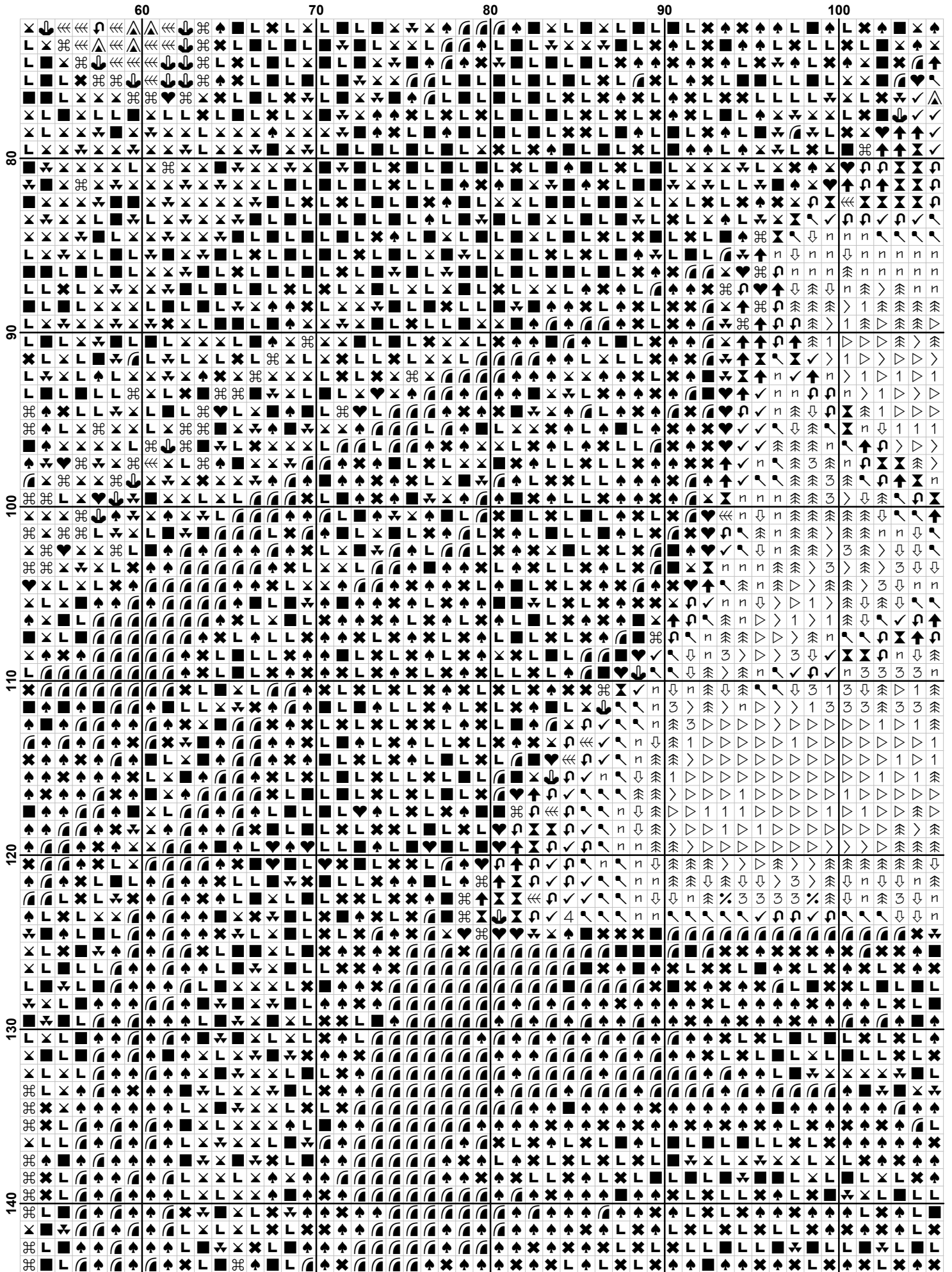


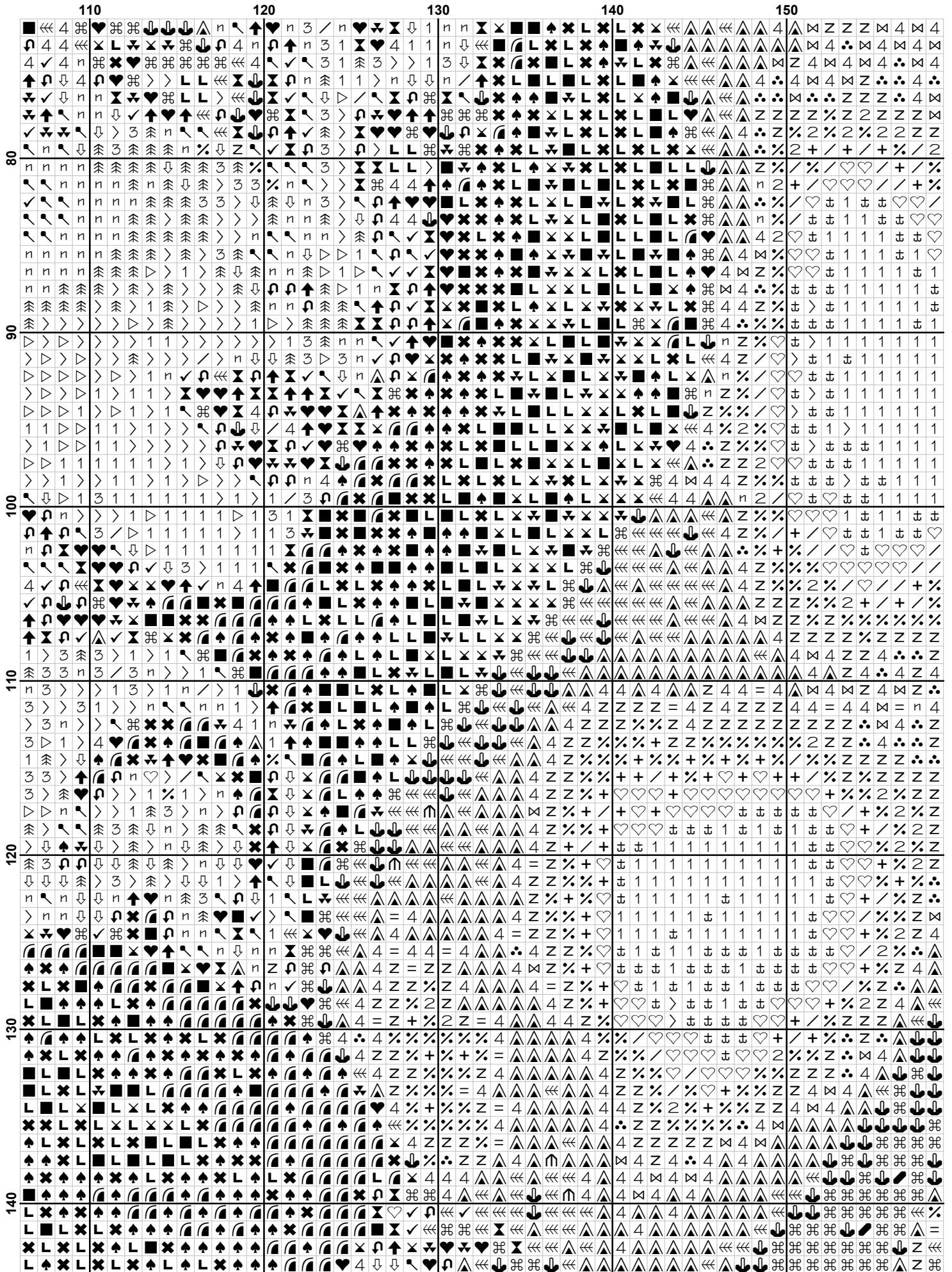


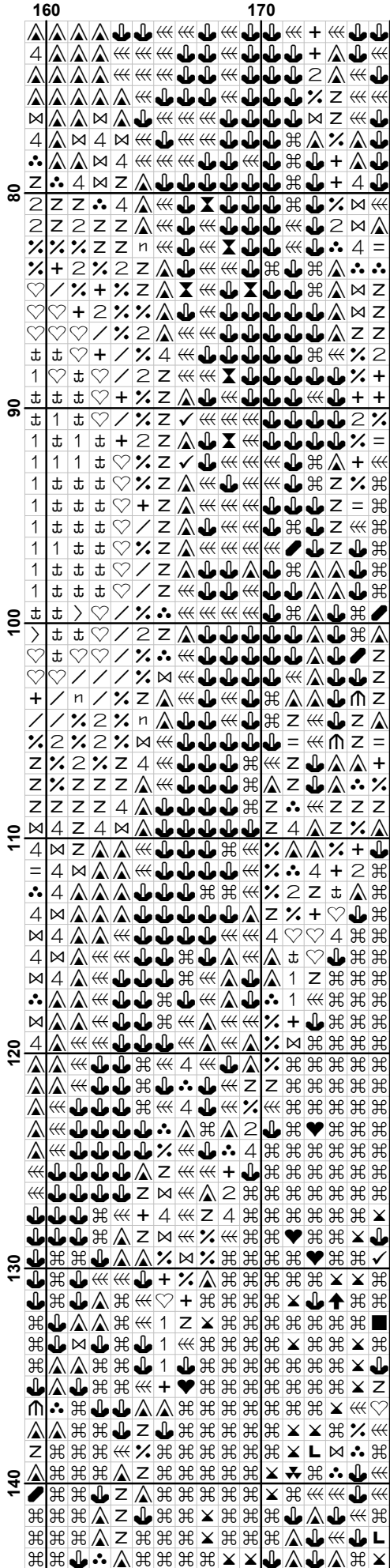


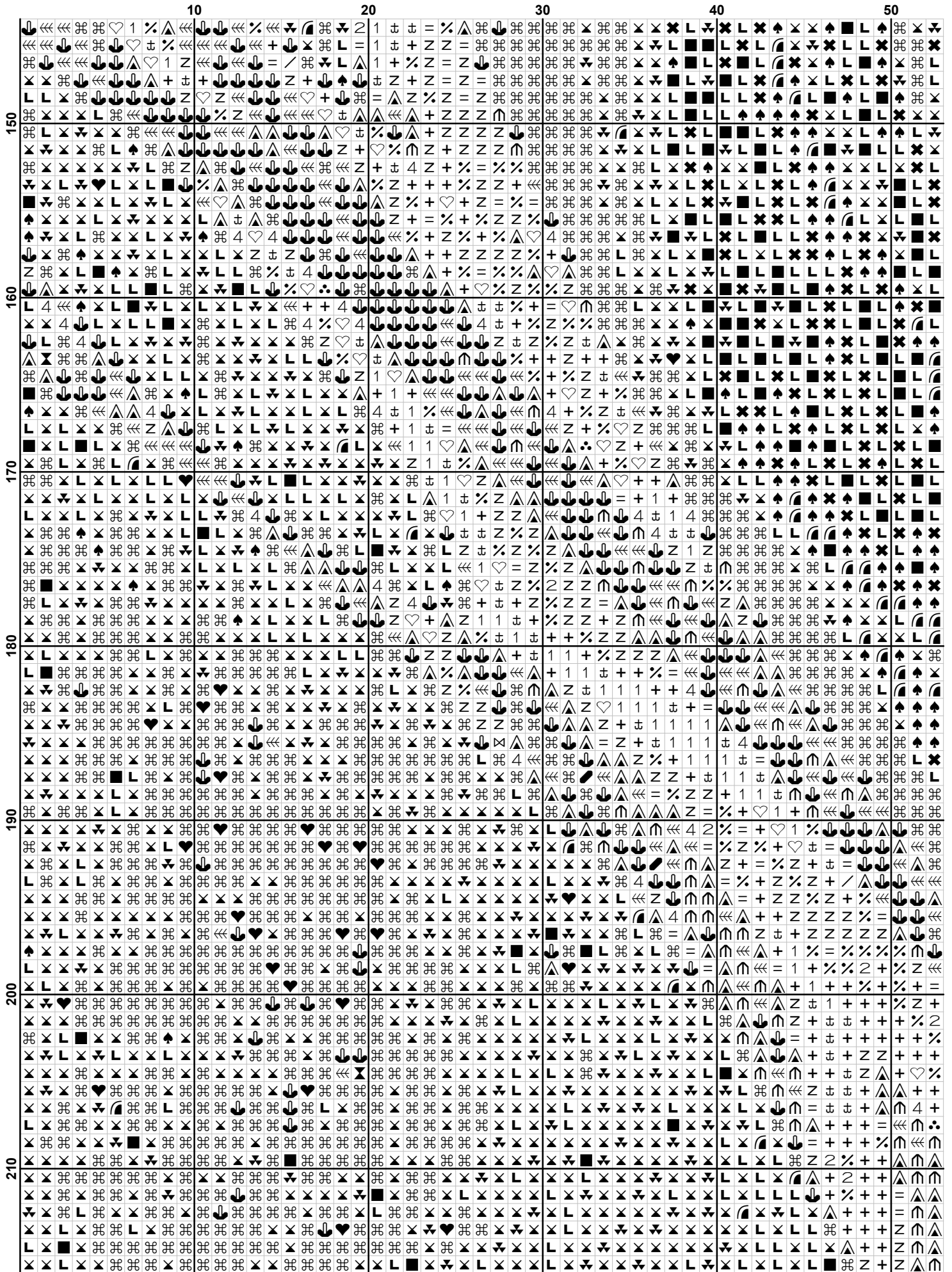


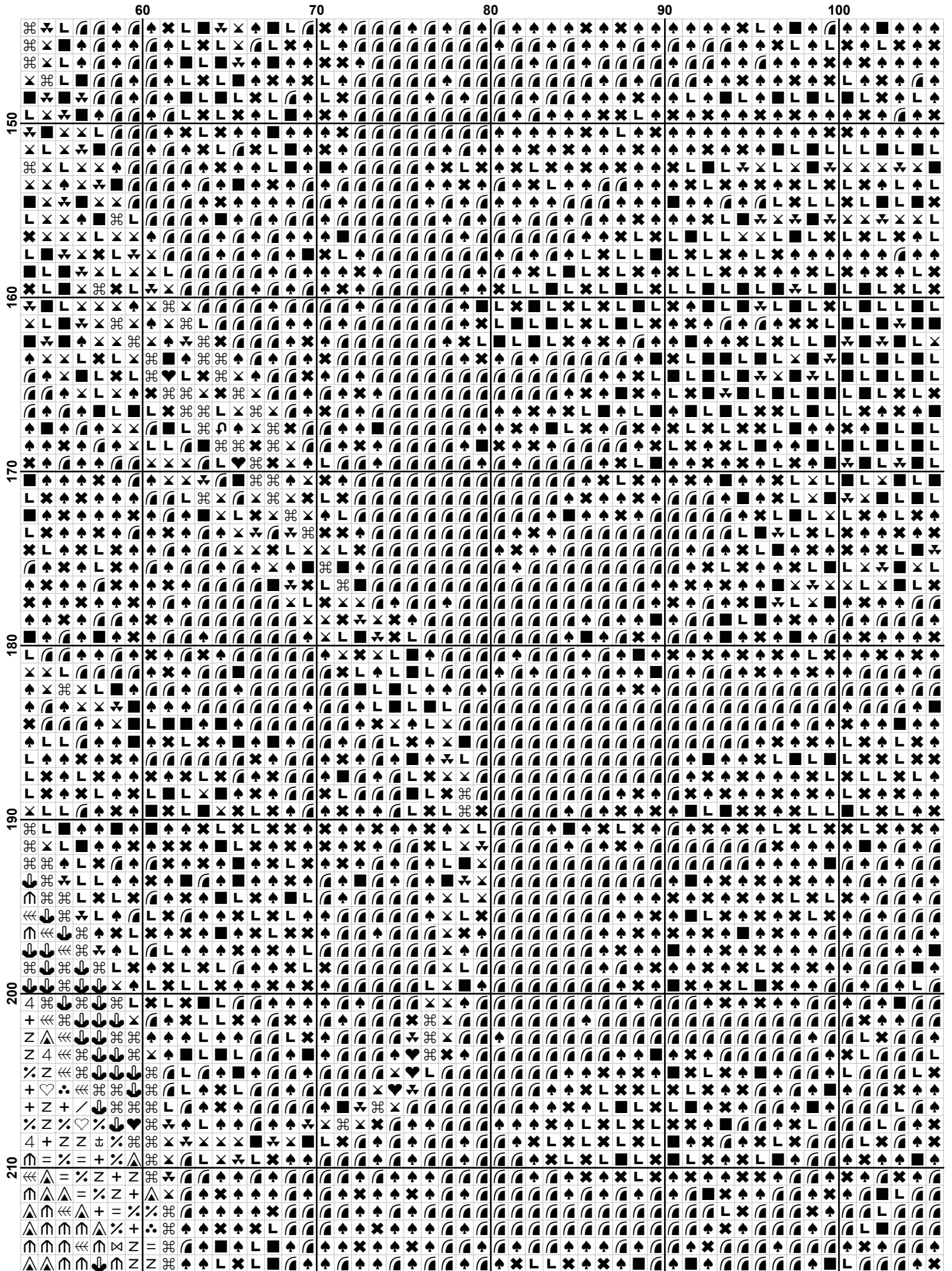


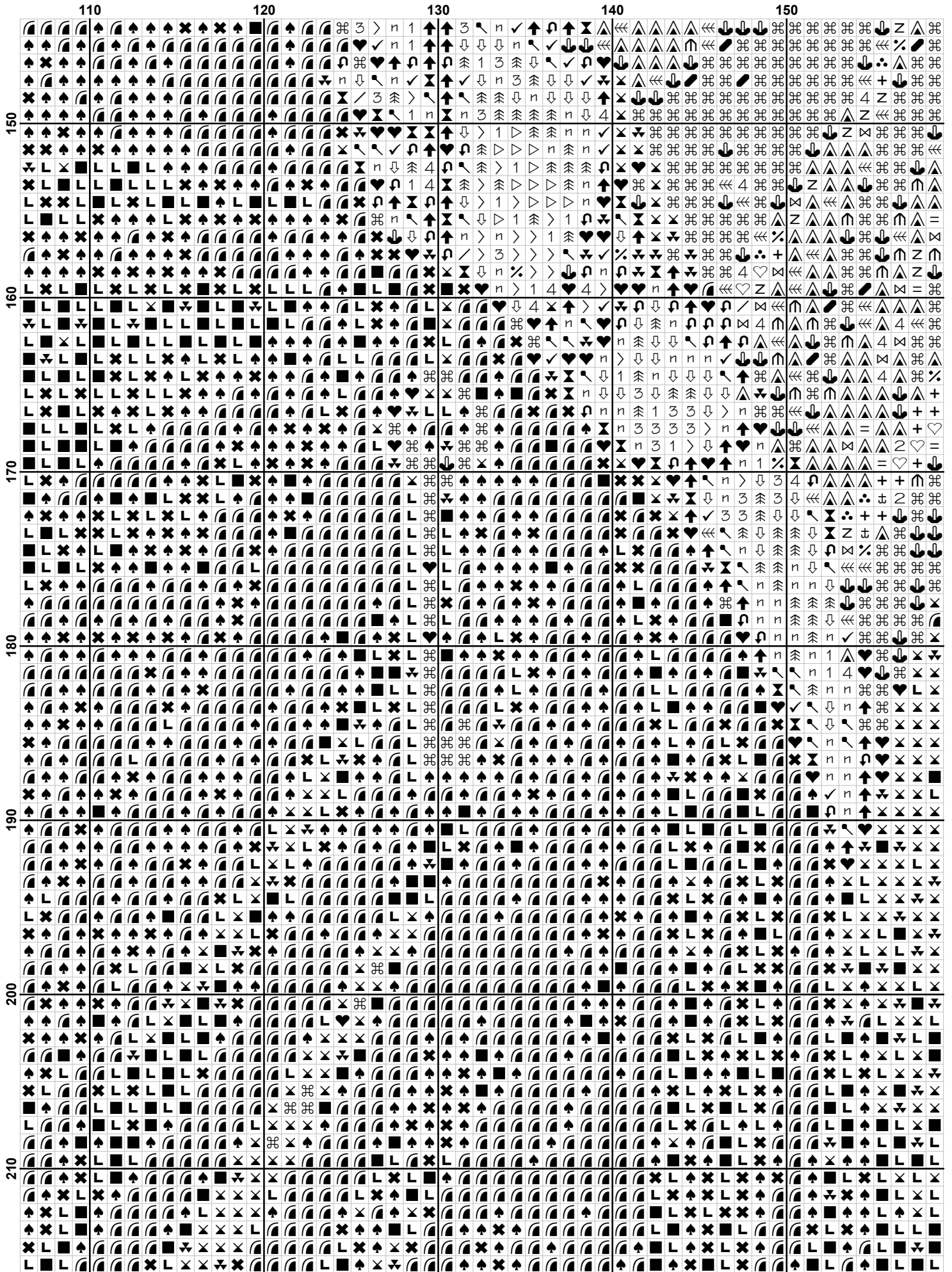


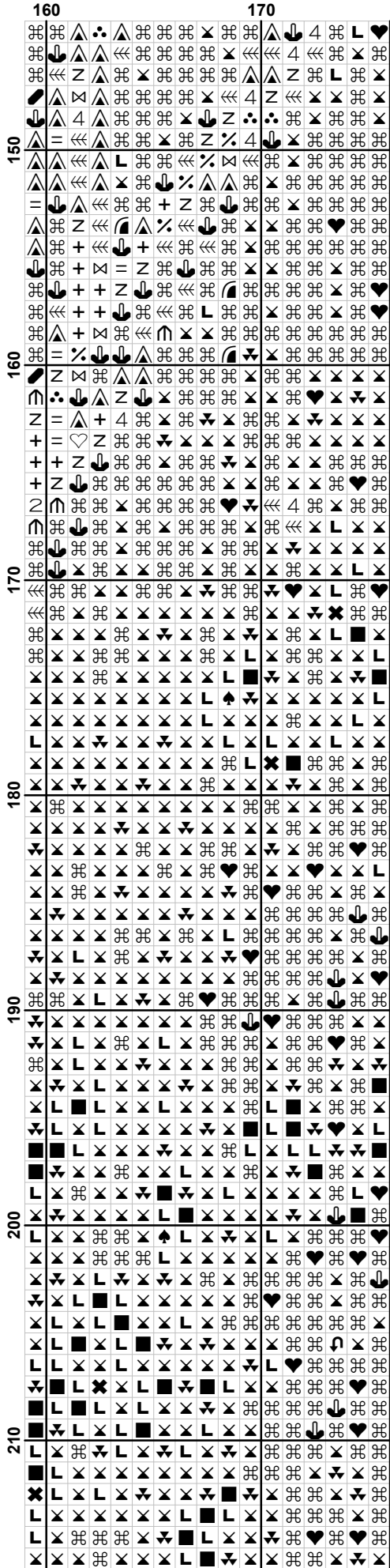


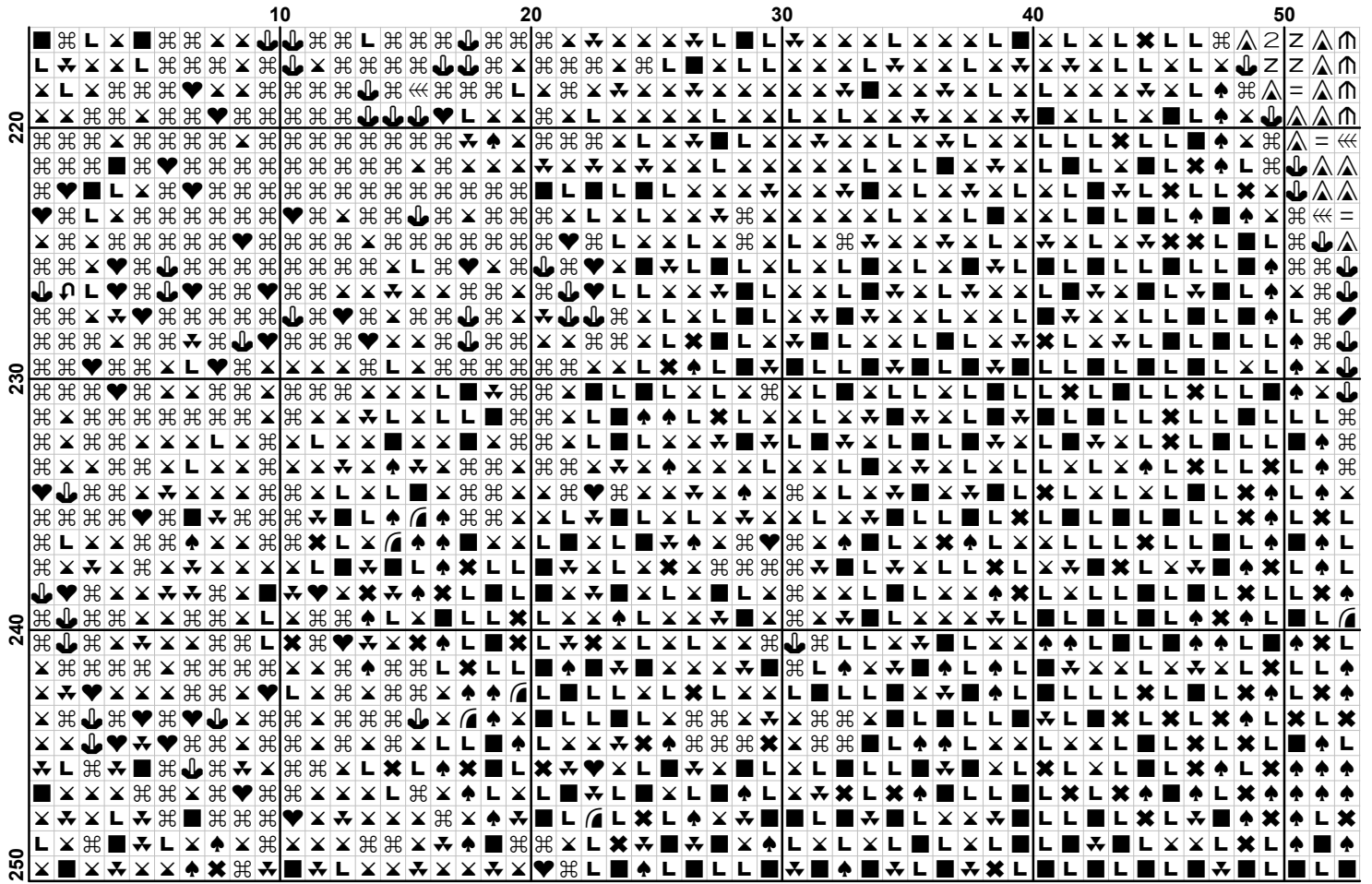


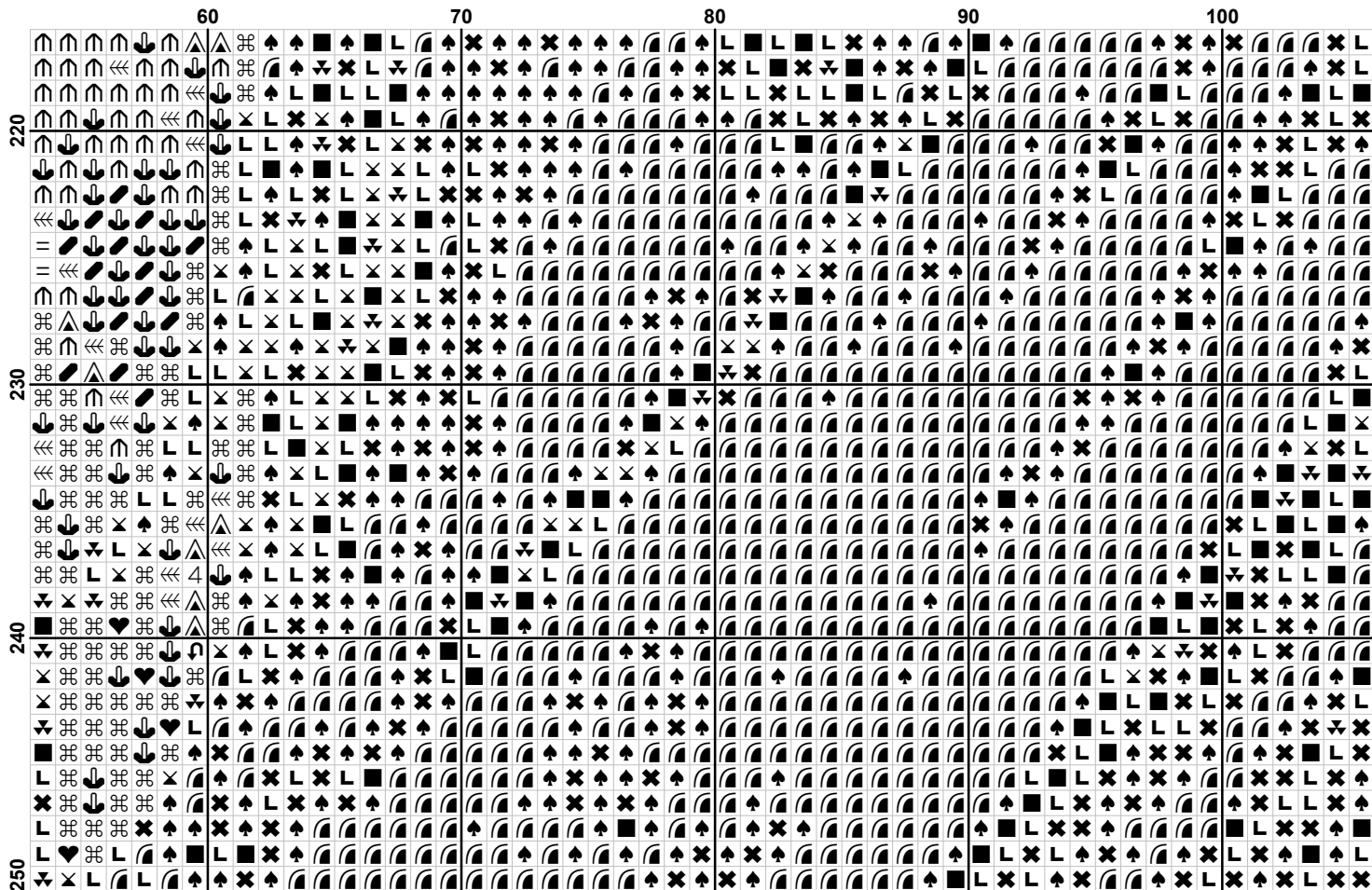


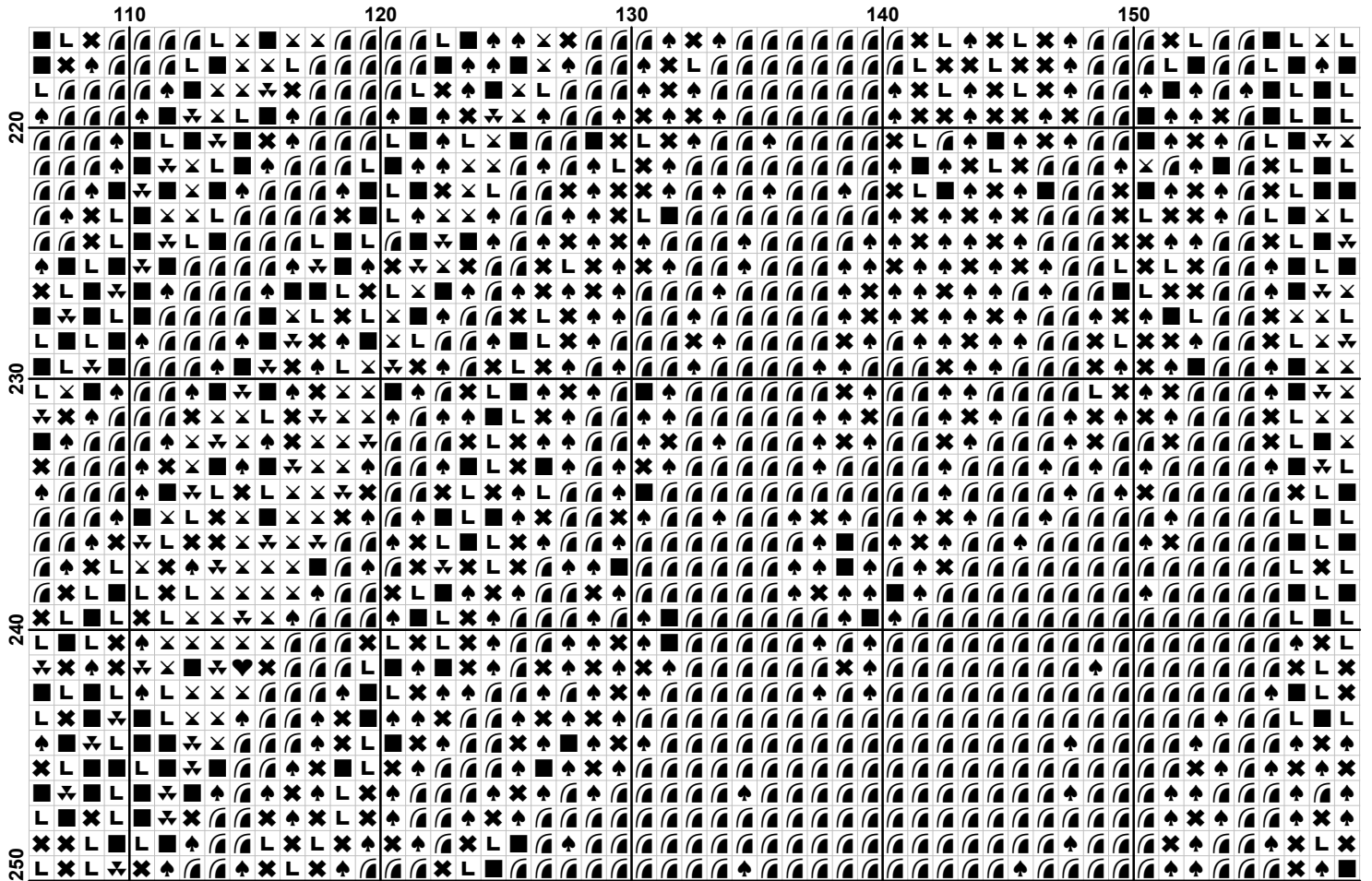


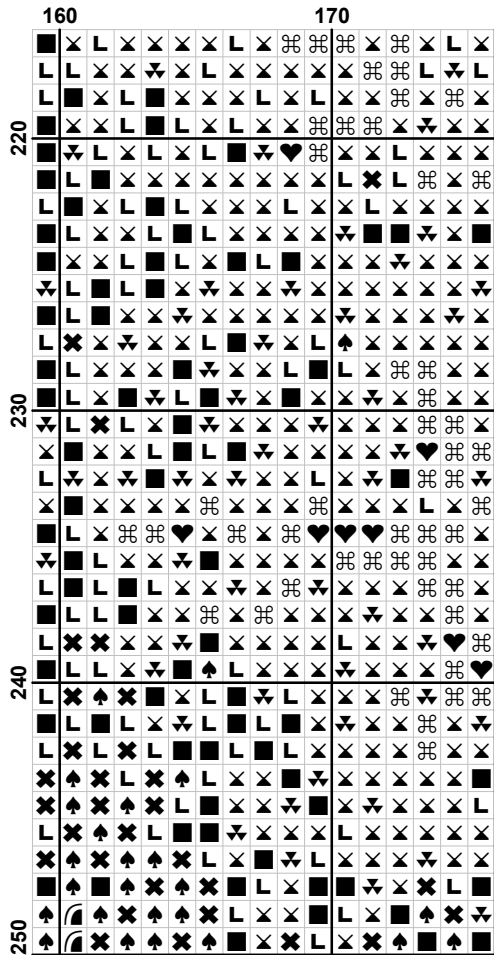



















Pattern Name: Moonworshiper
Designed By: Intricate Cross Stitch
Company: intricatecrossstitch.com
Copyright: Intricate Cross Stitch
Fabric: Aida 14, White
 176w X 250h Stitches
Size(s): 14 Count, 12-1/2w X 17-3/4h in
 16 Count, 11w X 15-5/8h in
 18 Count, 9-3/4w X 13-7/8h in
 22 Count, 8w X 11-1/4h in

Floss Used for Full Stitches:

Symbol	Strands	Type	Number	Color
	=	2	DMC 159	Gray Blue-LT
	∩	2	DMC 160	Gray Blue-MD
	∩	2	DMC 161	Gray Blue
	∩	2	DMC 168	Pewter-VY LT
	∩	2	DMC 169	Pewter-LT
	>	2	DMC 225	Shell Pink-UL VY LT
	■	2	DMC 310	Black
	⌘	2	DMC 317	Pewter Gray
	∩	2	DMC 318	Steel Gray-LT
	∩	2	DMC 336	Navy Blue
	∩	2	DMC 414	Steel Gray-DK
	z	2	DMC 415	Pearl Gray
	∩	2	DMC 451	Shell Gray-DK
	∩	2	DMC 452	Shell Gray-MD
	∩	2	DMC 453	Shell Gray-LT
	♥	2	DMC 535	Ash Gray-VY LT
	∩	2	DMC 543	Beige Brown-UL VY LT
	∩	2	DMC 550	Violet-VY DK
	↑	2	DMC 646	Beaver Gray-DK
	✓	2	DMC 647	Beaver Gray-MD
	1	2	DMC 712	Cream
	∩	2	DMC 762	Pearl Gray-VY LT
	L	2	DMC 823	Navy Blue-DK
	n	2	DMC 842	Beige Brown-VY LT
	∩	2	DMC 927	Gray Green-LT
	2	2	DMC 928	Gray Green-VY LT
	♠	2	DMC 939	Navy Blue-VY DK
	▷	2	DMC 948	Peach-VY LT
	3	2	DMC 3033	Mocha Brown-VY LT
	4	2	DMC 3042	Antique Violet-LT
	/	2	DMC 3072	Beaver Gray-VY LT
	✕	2	DMC 3371	Black Brown
	∩	2	DMC 3743	Antique Violet-VY LT
	+	2	DMC 3747	Blue Violet-VY LT
	∩	2	DMC 3756	Baby Blue-UL VY LT
	∩	2	DMC 3799	Pewter Gray-VY DK
	∩	2	DMC 3861	Cocoa-LT

Usage Summary

Strands Per Skein: 6
Skein Length: 313.0 in

Type	Number	Full	Half	Quarter	Petite	Back(in)	Str(in)	Spec(in)	French	Bead	Skein Est.
DMC 159	159	162	0	0	0	0.0	0.0	0.0	0	0	1.000
DMC 160	160	193	0	0	0	0.0	0.0	0.0	0	0	1.000
DMC 161	161	114	0	0	0	0.0	0.0	0.0	0	0	1.000
DMC 168	168	181	0	0	0	0.0	0.0	0.0	0	0	1.000
DMC 169	169	1348	0	0	0	0.0	0.0	0.0	0	0	1.000
DMC 225	225	242	0	0	0	0.0	0.0	0.0	0	0	1.000
DMC 310	310	2266	0	0	0	0.0	0.0	0.0	0	0	1.000
DMC 317	317	6687	0	0	0	0.0	0.0	0.0	0	0	3.000
DMC 318	318	1453	0	0	0	0.0	0.0	0.0	0	0	1.000
DMC 336	336	4884	0	0	0	0.0	0.0	0.0	0	0	3.000
DMC 414	414	2499	0	0	0	0.0	0.0	0.0	0	0	2.000
DMC 415	415	1182	0	0	0	0.0	0.0	0.0	0	0	1.000
DMC 451	451	150	0	0	0	0.0	0.0	0.0	0	0	1.000
DMC 452	452	182	0	0	0	0.0	0.0	0.0	0	0	1.000
DMC 453	453	165	0	0	0	0.0	0.0	0.0	0	0	1.000
DMC 535	535	471	0	0	0	0.0	0.0	0.0	0	0	1.000
DMC 543	543	247	0	0	0	0.0	0.0	0.0	0	0	1.000
DMC 550	550	1398	0	0	0	0.0	0.0	0.0	0	0	1.000
DMC 646	646	132	0	0	0	0.0	0.0	0.0	0	0	1.000
DMC 647	647	123	0	0	0	0.0	0.0	0.0	0	0	1.000
DMC 712	712	563	0	0	0	0.0	0.0	0.0	0	0	1.000
DMC 762	762	564	0	0	0	0.0	0.0	0.0	0	0	1.000
DMC 823	823	3826	0	0	0	0.0	0.0	0.0	0	0	2.000
DMC 842	842	293	0	0	0	0.0	0.0	0.0	0	0	1.000
DMC 927	927	155	0	0	0	0.0	0.0	0.0	0	0	1.000
DMC 928	928	133	0	0	0	0.0	0.0	0.0	0	0	1.000
DMC 939	939	3990	0	0	0	0.0	0.0	0.0	0	0	2.000
DMC 948	948	165	0	0	0	0.0	0.0	0.0	0	0	1.000
DMC 3033	3033	104	0	0	0	0.0	0.0	0.0	0	0	1.000
DMC 3042	3042	634	0	0	0	0.0	0.0	0.0	0	0	1.000
DMC 3072	3072	206	0	0	0	0.0	0.0	0.0	0	0	1.000
DMC 3371	3371	2402	0	0	0	0.0	0.0	0.0	0	0	2.000
DMC 3743	3743	1038	0	0	0	0.0	0.0	0.0	0	0	1.000
DMC 3747	3747	605	0	0	0	0.0	0.0	0.0	0	0	1.000
DMC 3756	3756	511	0	0	0	0.0	0.0	0.0	0	0	1.000
DMC 3799	3799	4556	0	0	0	0.0	0.0	0.0	0	0	2.000
DMC 3861	3861	176	0	0	0	0.0	0.0	0.0	0	0	1.000